



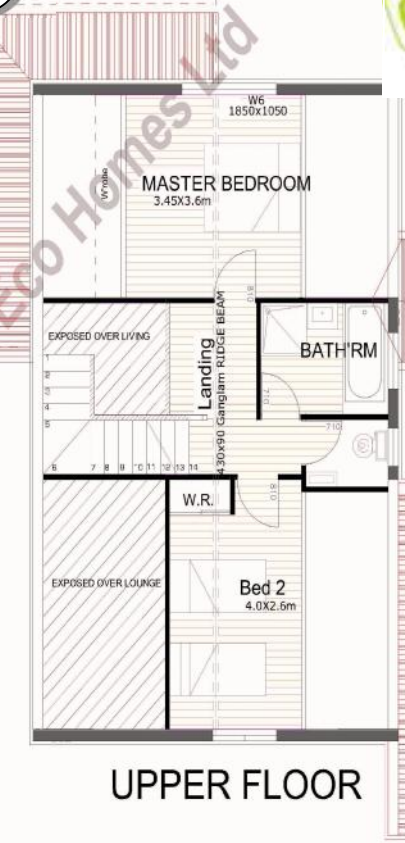
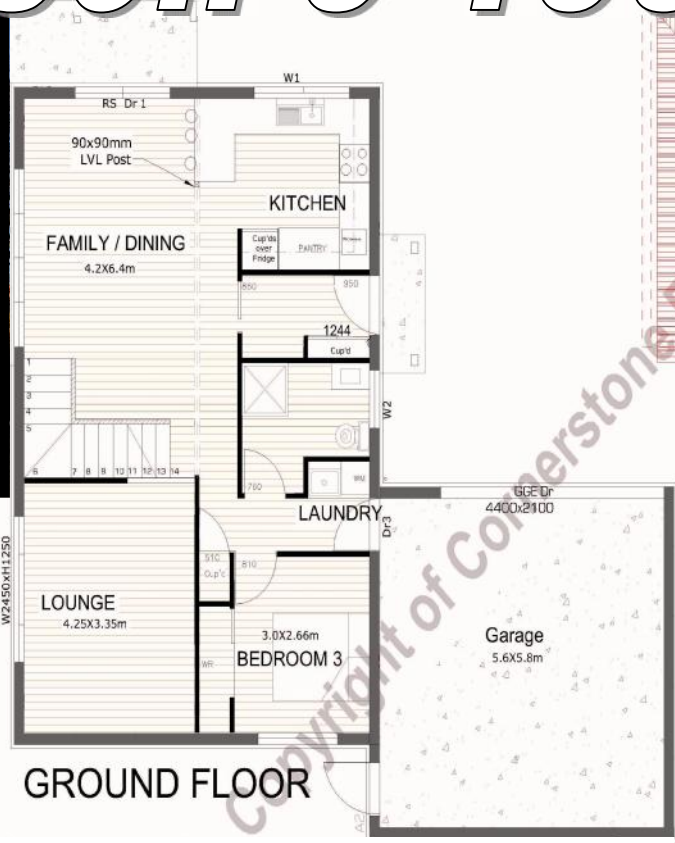
"Sustainability does not need to cost the earth if we all act now!
To ignore the affordable choices, may well cost our
Mokopuna (Grandchildren) their earth! "



CORNERSTONE
"eco" homes Ltd

It's not Rocket Science, lets get back to BASIC's with "SUPER INSULATION" + "SUN'S Free Energy" = "SAVE \$\$\$ + ENERGY + PLANET EARTH!"

the Gibson 3-155



Building Footprint
Ground floor area house = 80.64m²
Garage area = 35.12m²
Total footprint = 115.76m²
Upper floor = 40.00m²
Total blg area = 155.76m²

H1. R Values
CS Floor R Value 4.55 deg C/m²
CS Walls+cladding 4.825 deg C/m²
Roof 4.29 deg C/m²
BPI = 0.54

- 155 m² Home
- 3 bedrooms + study area
- 2 bathrooms, seperate toilet
- Good family & living area
- Internal access qaraqe

Ph 0800 4 cornerstone - www.cornerstoneecohomes.co.nz

CORNERSTONE ECO HOMES Ltd, choose the best products for SUSTAINABILITY. The SUPER INSULATED wall system, in our homes, is that of the AWARD WINNING "CORNERSTONE BUILDING SYSTEM" used in the home that won 2 GOLD MEDALS in the "2008 MASTER BUILDERS AWARDS" for the "Pink Batts Energy efficiency" plus the DBH "Best Sustainable Home less than \$500K."

We choose UPVC JOINERY as used in Europe, for thermal efficiency & reliability, as well as the SUNS FREE SOLAR ENERGY along with WATER CONSERVATION

